

# SYMPOSIUM INSERM NETWORK FIBER

## CLUSTER HEALTH - HORIZON EUROPE

### MAIN OBJECTIVES & RULES FOR PARTICIPATION

**Aude RAIMBAULT**  
EU Policy officer  
*Cluster Health-Mission*  
*Cancer-IHI partnership*  
*Inserm*  
[aude.raimbault@inserm.fr](mailto:aude.raimbault@inserm.fr)



# INSERM - CELLULE EUROPE

## Pôle Relations Européennes (PRE)



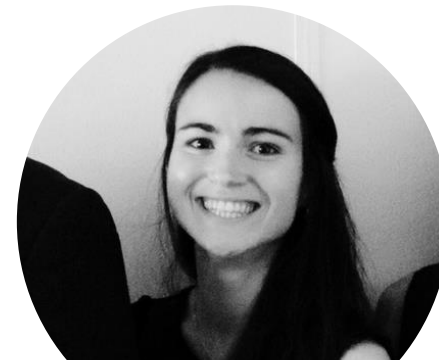
**Guillaume Fusai**

Responsable du Pôle Europe



**Laurence Garric**

ERC, EIT Health



**Aude Raimbault**

Cluster Santé (IHI -  
EDCTP3), mission cancer



**Géraldine Camilleri**

EIC Pathfinder



**Ivone Alves**

Communication

## Département des Ressources Humaines (DRH)



**Morgane Bureau**

Actions Marie S. Curie



## Département des Affaires Financières (DAF)



**Marion Di Maria**

Aspects Juridiques et Financiers



[cellule.europe@inserm.fr](mailto:cellule.europe@inserm.fr)  
[aude.raimbault@inserm.fr](mailto:aude.raimbault@inserm.fr)



[Plan d'action pour la mise en œuvre de la stratégie  
européenne de l'Inserm](#)

# MANY INSERM ACTORS CAN HELP YOU FROM YOUR PROJECT IDEA TO YOUR PROJECT SUBMISSION!

If management mandate held by Inserm

## CELLULE EUROPE / SIÈGE

- **Identify** the relevant instrument for your project
- Check that your project is in line with the call you have targeted
- **Analysis** of success factors in winning projects, writing tips
- Rules for participation
- Statistics
- Proof Reading (ERC and MSCA)

[cellule.europe@inserm.fr](mailto:cellule.europe@inserm.fr)



## YOUR REGIONAL DELEGATION

- Identify the relevant instrument for your project
- Check that your project is in line with the call you have targeted
- Assistance with **budgetary and legal arrangements**
- Financial management of the project if it is selected

## INSERM TRANSFERT

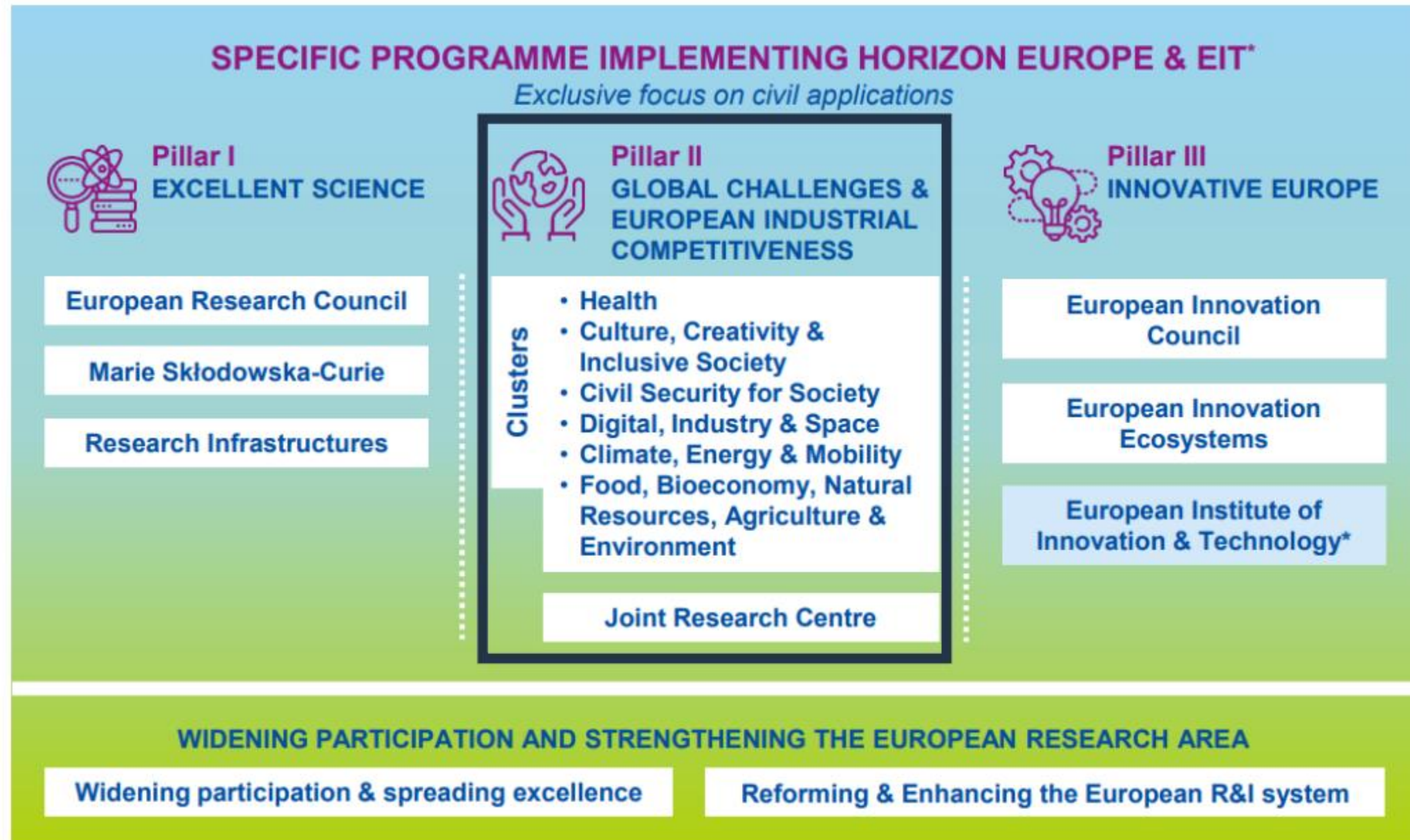
- To **coordinate** projects with several partners
- Dedicated project manager
- Planning, structuring, contribution to drafting
- Administrative organisation (partner data collection, meetings, submissic
- Set-up cc

➤ **Complementary actors working closely together**





# HORIZON EUROPE FUNDING OPPORTUNITIES



- Top-down approach
- Collaborative project with societal and economic impact
- In response to detailed calls for proposals



**Calls for proposals  
2026-2027  
DRAFT!**

# ELIGIBILITY CRITERIA



## COLLABORATIVE PROJECT

A consortium of partners brought together to **carry out a collaborative, multidisciplinary research and development project**, with both a societal impact for the **benefit of citizens** (and patients) and an **economic impact on healthcare systems**.

## Consortium funding 2 possible roles:

### COORDINATOR:

Single point of contact for the EC, ensuring the smooth running of the project and its deliverables, and interaction between the partners.

### PARTNER (Beneficiary) : responsible for a work-package or an activity

As many partners as expertise needed to complete the project

## CONSORTIUM COMPOSITION

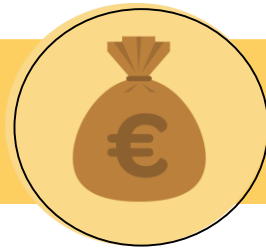
*At least 3 legal entities independent from each other : at least 1 independent legal entity established in a Member State + at least 2 other independent legal entities each established either in a different Member state or an Associated country*

*Any legal entity can participate (research body, university, patient association, private company, public health agencies, regulatory agencies, SMEs, etc.).*

## Countries eligible for funding:

- EU Member States
- Associated countries to HEU (such as UK/Switzerland)
- Some third countries
  - Low- and middle-income countries
  - Countries specified in calls

# STATISTICS



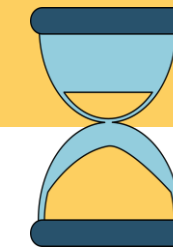
## AVERAGE BUDGET FOR CLUSTERS PROJECTS

### EU :

From 3 to 15M€ (7,7M€ for Cluster Health)

### INSERM :

- **Average budget per coordination (Inserm): 2M€**
- **Average budget as partner (Inserm) : 572 570€**



## NUMBER OF PARTNERS + DURATION

From 5 to 20 partners.

Duration : From 4 to 6 years

Examples – Inserm successful projects:





# 3 MAIN EVALUATION CRITERIA



*After verification of eligibility criteria:*

## SCIENTIFIC EXCELLENCE

4/5

**Clarity and pertinence of the project's objectives**, and the extent to which the proposed work is ambitious and goes beyond the state of the art

**Credibility of the proposed methodology**, in particular the underlying concepts, models, assumptions and inter-disciplinary approaches; sound scientific methodology

**Appropriate consideration of the gender dimension** in research and innovation content

**Quality of open science practices** including sharing and management of research outputs and engagement of citizens, civil society and end users where appropriate.

## IMPACT OF THE PROJECT

4/5

**To what extent will the project achieve the expected impacts?**

Credibility of the pathways to achieved the expected outcomes and impact specified in the work programme, and the likely scale and significance of the contribution due to the project

Suitability and quality of the measures to maximise expected outcomes and impacts, as set out in the dissemination and exploitation plan, including communication activities

## IMPLEMENTATION

4/5

**Quality and efficiency of the implementation** : quality and effectiveness of the work plan, assessment of risks and appropriateness of the effort assigned to work package and the resources overall

**Capacity and role of each participant**, and extent to which the consortium as a whole brings together the necessary expertise

**Threshold :12/15**

Part A Application form  
Part B Technical description (45 pages)



*Proposals aspects are assessed to the extent that the proposed work is within the scope of the work programme topic*



DRAFT WP 2026-2027 CLUSTER SANTE

2026	2027
14 calls – 1 step	14 calls
Opening : 10/02/2026	Opening: 10/02/2027
Deadline : 16/04/2026	Deadline (1 stage) : 13/04/2027
-	Deadline (2 stage) : 22/09/2027



# HORIZON-HLTH-2027-02-DISEASE-01-TWO-STAGE: INNOVATIVE HEALTHCARE INTERVENTIONS FOR NON-COMMUNICABLE DISEASES

AAP 2027 – 2 steps

RIA

**Deadline : 16/04/2027**

**8 projects- 7-8M€/projet**

## Scope:

Non-communicable diseases represent over 80% of the disease burden in Europe and the leading cause of avoidable premature deaths.

- **Innovative and effective healthcare interventions are required to provide treatment and disease management solutions and assure best quality of care for patients suffering from NCDs when prevention strategies have failed.**

**NCDs = cardiovascular diseases, diabetes, chronic respiratory diseases or chronic kidney diseases. Other diseases are not within the scope of this topic.**

## All the following aspects:

- **Perform rigorous early stage clinical trial(s)** [for pharmacological interventions: phase 1 and phase 2 clinical trials] **to validate novel or refined healthcare interventions\*** (for treatment and/or disease management solutions for patients suffering from NCDs. Whenever relevant, existing co- and multimorbidities should be addressed in the trial design. *(\*Applicants may address any mono- or combinatorial pharmacological and/or non-pharmacological interventions)*
- **Clinical trial(s) should be supported by completed proof-of-concept of clinical safety and efficacy.** *Comparative effectiveness studies are not within the scope of this topic.*
- **Both preclinical research and the draft clinical trial protocol should be completed at the time of submission of the proposal.** Proposals should also demonstrate evidence of preliminary consultations with ethics and regulatory authorities at the time of submission

# HORIZON-HLTH-2027-02-DISEASE-01-TWO-STAGE: INNOVATIVE HEALTHCARE INTERVENTIONS FOR NON-COMMUNICABLE DISEASES

- **A sound feasibility assessment**, including an **appropriate patient selection and realistic recruitment plans**, justified by publications or preliminary results should be provided
- **Take into account sex and gender differences** in all relevant aspects throughout the research process, and consider stratification criteria such as age, disability, ethnicity, socio-economic status, genetic and epigenetic variations, etc., where relevant.
- **Use and/or develop technologies**, including digital ones (e.g., (generative) AI, wearable technologies) to help implement and monitor the long-term efficacy of the intervention(s), as well as manage the disease and/or monitor their progression (*e.g. with unobtrusive technologies suitable for patient monitoring at home and in real-world conditions*), whilst also ensuring they are bias-free, inclusive, and ethically sound. **The use of virtual human twins could also be considered, where relevant**
- **Exploit existing data, health data infrastructures, biobanks, registries and/or cohorts, together with the generation of new data** that should be managed in line with the FAIR principles, when relevant; *For instance BBMRI, ELIXIR, EU-OPENSCREEN, EATRIS, ECRIN, EATRIS, etc.*

## Consortium:

- Engage all relevant stakeholders (especially **patients and patients' representatives, caregivers, clinicians, counsellors, regulators**, etc.) to design end-user optimised interventions.
- Engage with **national public health authorities and regulators** to ensure a robust development pathway and further uptake of the intervention.
- **SMEs** to strengthen their scientific and technological foundations, enhancing their innovation potential, and exploring possibilities for commercial exploitation.
- SHS



# CLUSTER HEALTH- CALL OF PROPOSALS – DRAFT 2026-2027

Destination 1		
Addressing disabilities through the life course to support independent living and inclusion	2027 – 1 étape RIA	7 projets 6-8M€/projet
Behavioural interventions as primary prevention for non-communicable diseases (NCDs) among young people	2026 – 1 étape RIA	2 projets 9-10M€/projet
Destination 2		
Towards a better understanding and anticipation of the impacts of climate change on health	2026 – 1 étape RIA	7 projets 7-8M€/projet
Integrating climate-related exposures into the human exposome and characterising its changes in response to climate change	2027 – 1 étape RIA	4 projets 10-11M€/projet
Tools and technologies to support health adaptation to climate change	2027 – 1 étape PCP	4 projets 4-5M€/projet
Towards climate resilient, prepared and carbon neutral populations and healthcare systems	2026 – 1 étape RIA	7 projets 7-8M€/projet
Support for a multilateral initiative on climate change and health research	2026 – 1 étape CSA	1 projet 3M€



# CLUSTER HEALTH- CALL OF PROPOSALS – DRAFT 2026-2027

Destination 3		
<b>Innovative healthcare interventions for non-communicable diseases (cardiovascular diseases, diabetes, chronic respiratory diseases or chronic kidney diseases)</b>	2027 – 2 étapes RIA	10 projets 7-8M€/projet
Innovative interventions to prevent the harmful effects of using digital technologies on the mental health of children and young adults	2026 – 1 étape RIA	7 projets 8M€/projet
Advancing research on the prevention, diagnosis, and management of post-infection long-term conditions	2026 – 1 étape RIA	5 projets 6-8M€/projet
Development of novel vaccines for pathogens with epidemic potential	2026 – 1 étape RIA	5 projets 10 M€/projet
Development of novel broad spectrum small molecule antiviral therapeutics for pathogens with epidemic potential	2027 – 1 étape RIA	5 projets 10 M€/projet
Development of monoclonal antibodies to prevent and treat infections from Flaviviridae	2026 – 1 étape RIA	5 projets 10 M€/projet
Development of monoclonal antibodies to prevent and treat infections from Filo- Phenui-, Picorna- and Toga Viridae	2027 – 1 étape RIA	5 projets 10 M€/projet





# CLUSTER HEALTH- CALL OF PROPOSALS – DRAFT 2026-2027

Destination 3		
Development of innovative antimicrobials or antibody-based therapies against critical pathogens resistant to antimicrobials (AMR)	2027 – 1 étape RIA	5 projets 8-10 M€/projet
Multisectoral approach to tackle chronic non-communicable diseases: implementation research maximising collaboration and coordination with sectors and in settings beyond the healthcare system (GACD)	2026-1 étape RIA	3 projets 3-4 M€/projet
Prevention and management of chronic non-communicable diseases in children and young people (GACD)	2027 – 1 étape RIA	3 projets 3-4 M€/projet
Understanding of gender-specific mechanisms of cardiovascular diseases: determinants, risk factors and pathways	2026-1 étape RIA	7 projets 5-7M€/projet
Advancing innovative interventions for neurodegenerative diseases	2027-1 étape RIA	5 projets 10M€/projet
Innovation upscaling in Cardiovascular Health	2026-1 étape CSA	1 projet 2M€



# CLUSTER HEALTH- CALL OF PROPOSALS – DRAFT 2026-2027

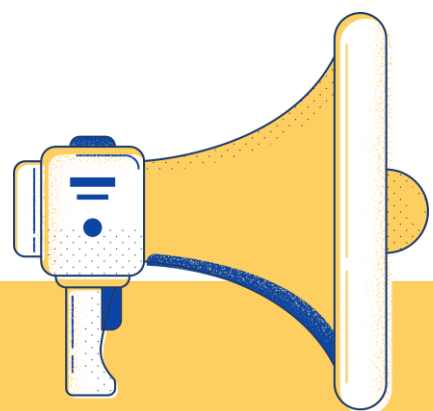
Destination 4		
Public procurement of innovative solutions (PPI) for improving citizen's access to healthcare through integrated care	2026 – 1 étape PPI	5 projets 3-5 M€/projet
Personalised approaches to reduce risks from Adverse Drug Reactions due to administration of multiple medications	2027 – 1 étape RIA	5 projets 8-10M€/projet
Identifying and Addressing Low-Benefit Care in Health and Care Systems	2026 – 1 étape RIA	5 projets 10M€/projet
Destination 5		
Development of predictive biomarkers of disease progression and treatment response by using AI methodologies for chronic communicable diseases	2027 – 1 étape RIA	7 projets 6-8M€/projet
Advancing bio-printing of living cells for regenerative medicine	2027 – 1 étape RIA *Ouverture: 3/06/2027 Deadline : 21/09/2027	5 projets 7-10M€/projet
Integrating New Approach Methodologies (NAMs) to advance biomedical research and regulatory testing	2026 – 1 étape RIA	7 projets 5-8M€/projet
Virtual Human Twins (VHTs) for integrated clinical decision support in prevention and diagnosis	2027 – 1 étape RIA	4 projets 10-12M€/projet



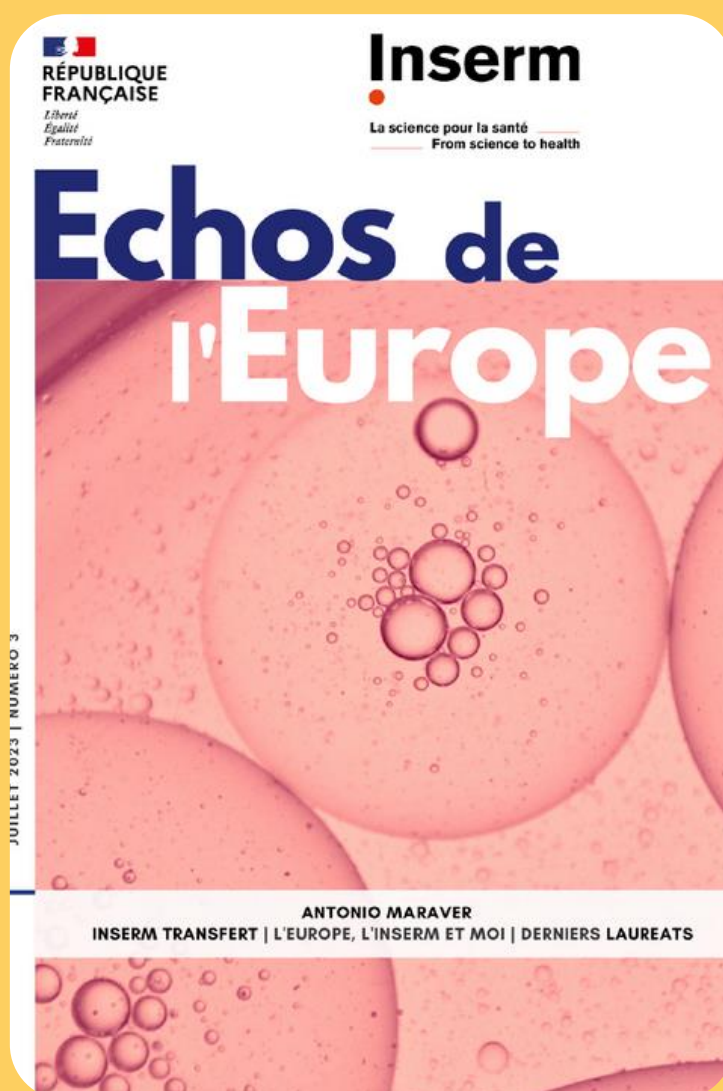
# CLUSTER HEALTH- CALL OF PROPOSALS – DRAFT 2026-2027

Destination 6		
Cell-free protein synthesis platforms for discovery and/or production of biologicals	2027 – 1 étape RIA	5 projets 6-8M€/projet
Portable and versatile Point-of-care diagnostics	2027 – 2 étapes IA	7 projets 5-7M€/projet
Regulatory science to support translational development of patient-centred health technologies	2026-1 étape RIA	4 projets 4-6M€/projet





# COMMUNICATION AND VISIBILITY INITIATIVES



<https://www.calameo.com/books/005154450893789c14fb7>

**VOUS ENVISAGEZ LE DÉPÔT D'UN PROJET EUROPÉEN AVEC L'INSERM ?**

**Bénéficiez de l'expérience d'un.e lauréat.e !**

- 1. Je contacte**  
la Cellule Europe de l'Inserm ou le correspondant Europe de ma Délégation Régionale.
- 2. J'explique**  
mon projet, l'instrument de financement si identifié et je détaille mes besoins.
- 3. La Cellule Europe**  
ou le correspondant Europe me met en relation avec le.a lauréat.e du réseau RAISE qui pourra m'aider.

[Horizon Europe : quels outils pour financer mon projet - Inserm pro](#)

**Les projets européens, pourquoi pas vous ?**

**La Cellule Europe de l'Inserm vous accompagne !**

E-MAIL : [HORIZON@EUROPE@INSERM.FR](mailto:HORIZON@EUROPE@INSERM.FR)  
LINKEDIN : [INSERM | CELLULE EUROPE](#)



**Cellule Europe**  
[cellule.europe@inserm.fr](mailto:cellule.europe@inserm.fr)

**Inserm | Cellule Europe**  
Accompagnement personnalisé vers la réussite de vos projets européens  
Services de recherche · Paris, Île-de-France · 3 K abonnés · 2-10 employés

**Devenez Expert Évaluateur**  
**AUPRÈS DE LA COMMISSION EUROPÉENNE\***

**POURQUOI ?**

- ✓ Enrichir ses connaissances en évaluant des projets scientifiques Horizon Europe
- ✓ Mieux comprendre les critères d'évaluation
- ✓ Améliorer l'écriture de son projet européen
- ✓ Construire ou étoffer son réseau

\*Activité rémunérée

Pour savoir comment devenir expert-évaluateur ou être mis en contact avec des chercheurs Inserm qui le sont déjà, contacter : [cellule.europe@inserm.fr](mailto:cellule.europe@inserm.fr)

Replay – [Table ronde – Devenir expert-évaluateur auprès de la CE \(juin 2024\)](#)  
[Work as an expert | EU Funding & Tenders Portal \(europa.eu\)](#)



**Inserm**